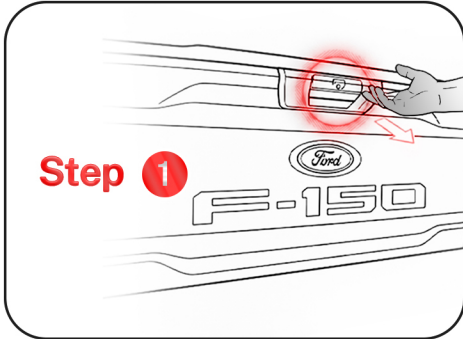
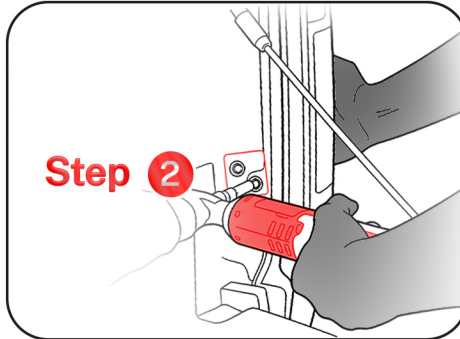


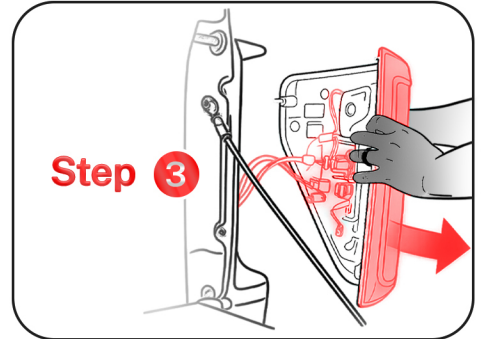
BRAKE LIGHT INSTALLATION GUIDE



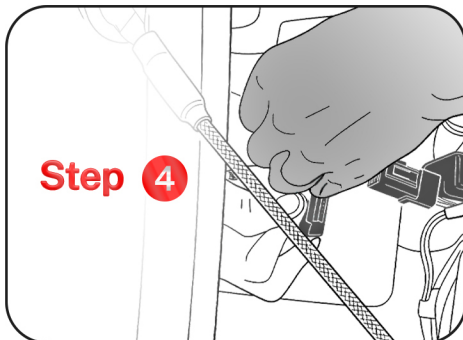
Open Tailgate



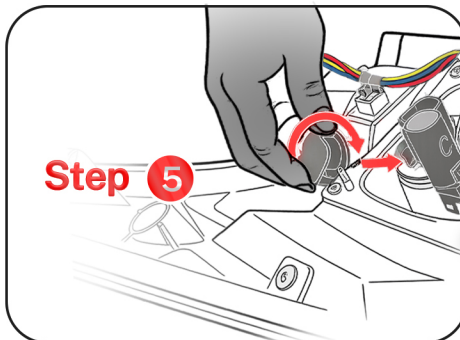
Locate and Remove Two 7MM Screws



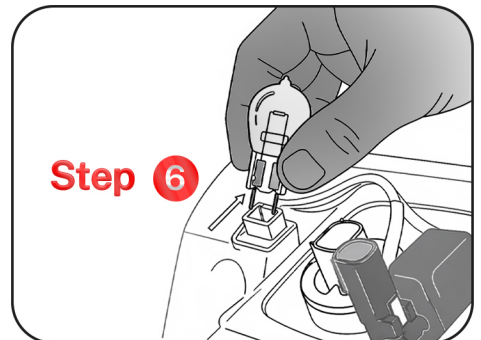
Pull Taillight Out



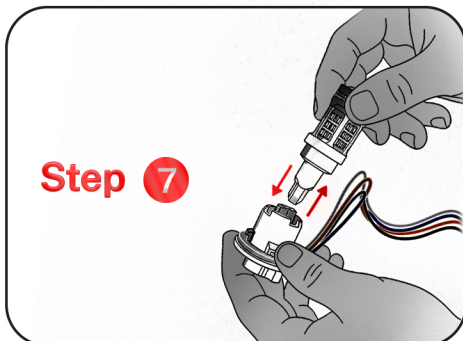
Pinch and Pull to Detach the Two Plugs Holding the Taillight to Harness



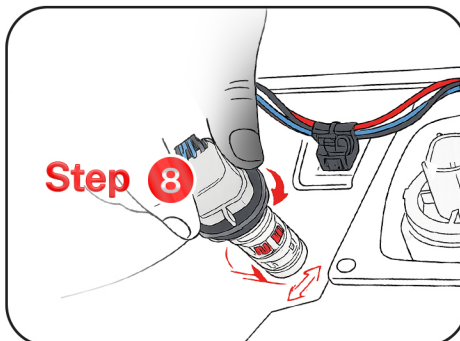
Locate the Two Brake Bulbs and Twist Counterclockwise and Pull the Socket out



Pull Factory Bulb Out of Socket



Plug Underground Led Bulb Into the Empty Socket



Reinsert and Twist Clockwise to Lock in the Socket



Repeat Steps with Second Bulb